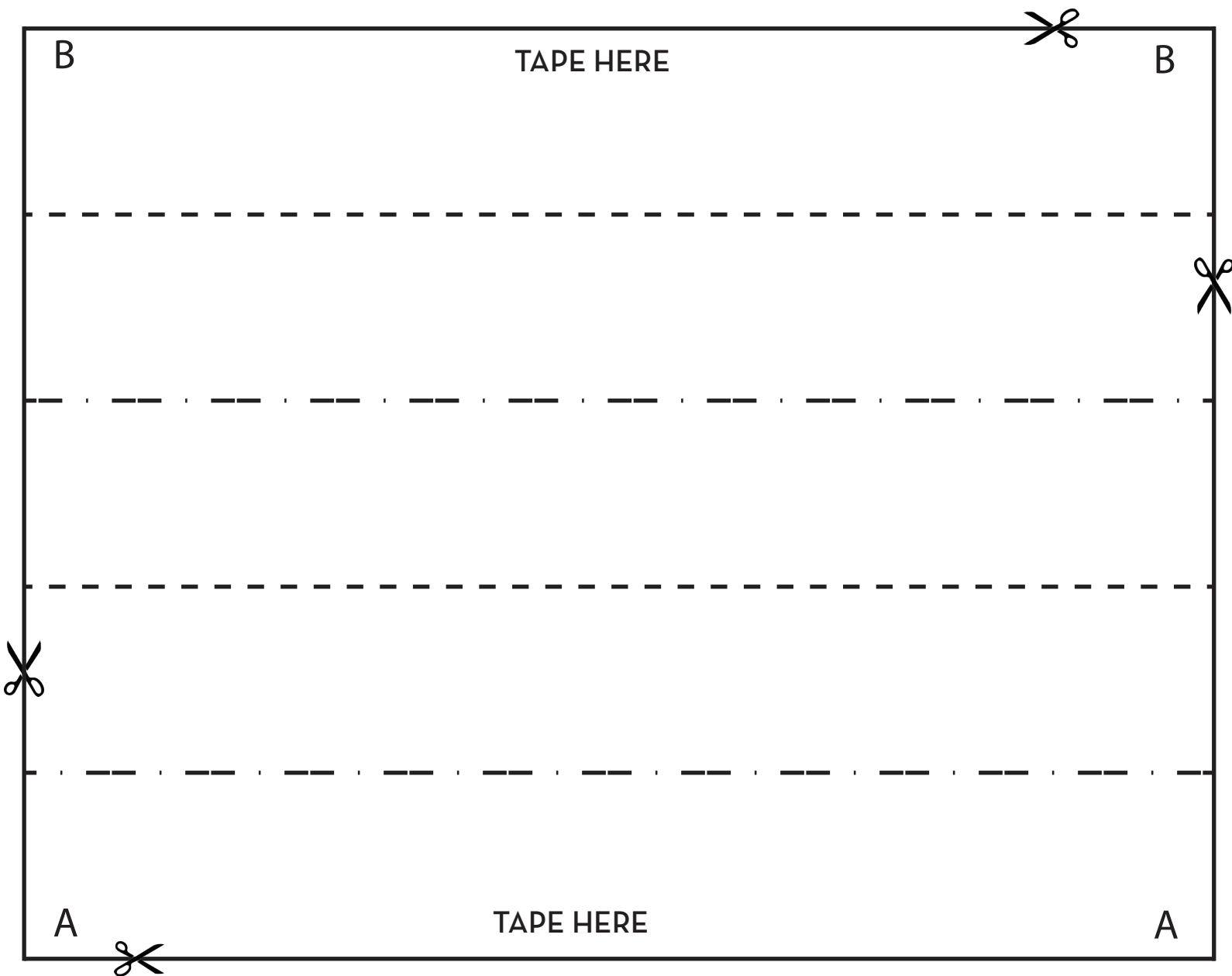


# 5 - POINTED STAR POURING COLUMN TEMPLATE



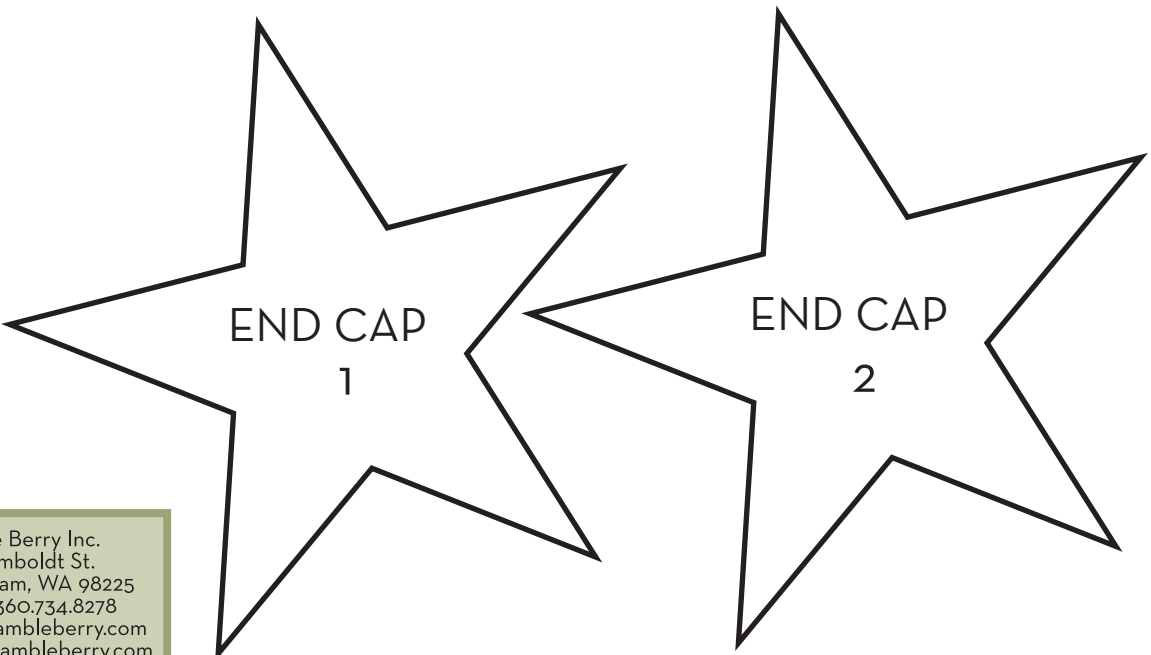
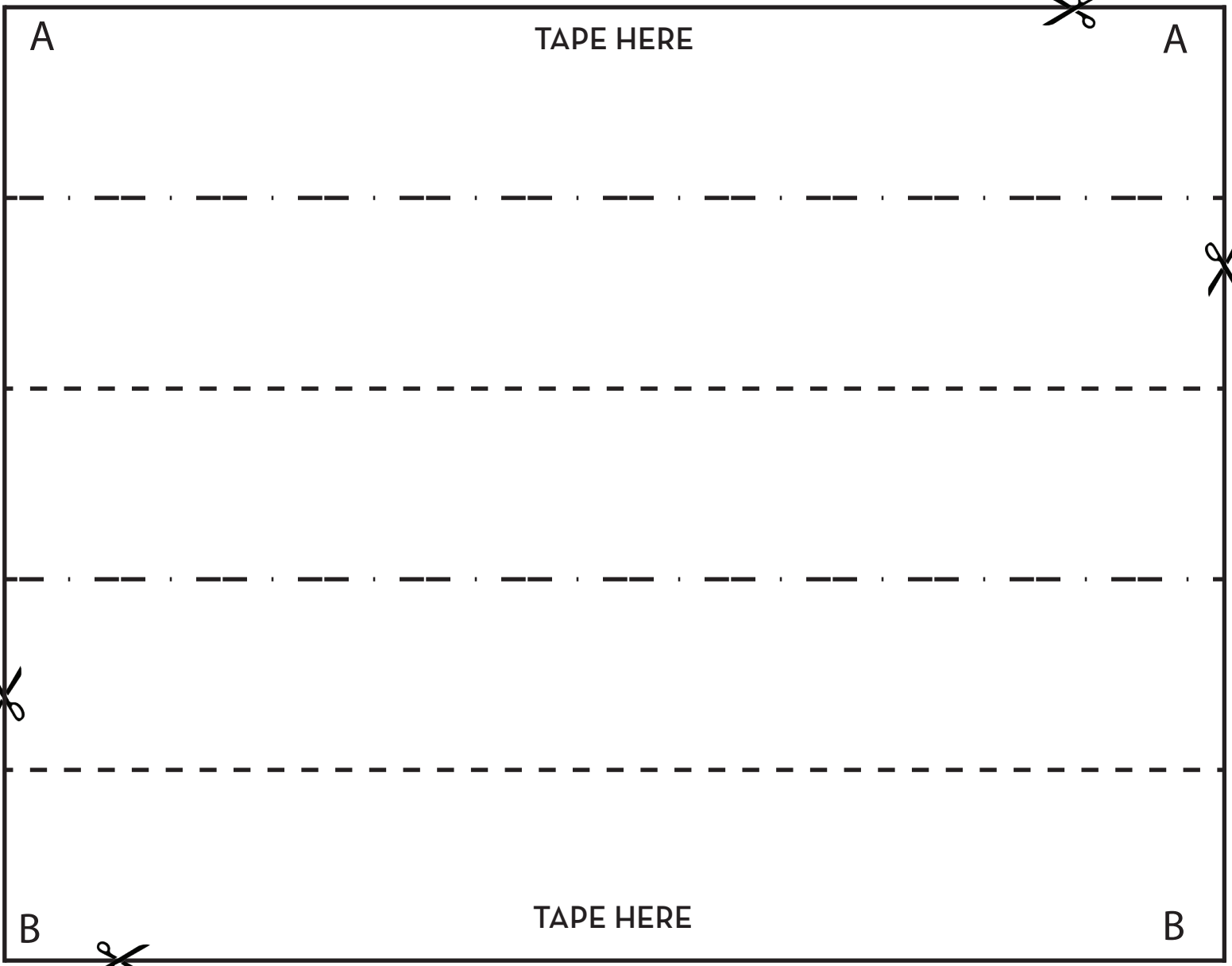
1) CUT ALONG SOLID LINES

2) APPLY TO CARDBOARD. CUT CARDBOARD TO THE SAME OUTLINE FOR BOTH THE RECTANGLE AND THE STAR

3) USE THE ABOVE TEMPLATE TO SCORE YOUR CARDBOARD. WE PLACED A RULER ALONG THE DOTTED LINES AND USED A CRAFT KNIFE TO SCORE THE FRONT AND BACK OF THE CARDBOARD CREATING AN ACCORDION SHAPE.

4) TO ASSEMBLE: TAPE THE TWO ACCORDION PIECES TOGETHER, TAPING EDGE A TO EDGE A, AND EDGE B TO EDGE B.

5) TAPE ONE STAR SHAPED END CAP ON AND THEN FILL THE COLUMN WITH A WEIGHT SUCH AS ROCKS OR PENNIES, ETC. ADD THE OTHER END CAP AND ENSURE BOTH ENDS ARE SECURELY TAPED.



**BRAMBLE BERRY**  
SOAP MAKING SUPPLIES

Bramble Berry Inc.  
2138 Humboldt St.  
Bellingham, WA 98225  
phone: 360.734.8278  
www.brambleberry.com  
info@brambleberry.com

